

RESOLUTION No. 77-216

A resolution granting a permit to Florida Power and Light Co. to install an electric distribution facility at the Nassau County Police Administration and Detention Facility on the southside of A1A two miles west of Yulee; and providing when this resolution shall take effect.

Whereas, F.P.&L. has requested permission to install a power distribution facility to serve this jail; and

Whereas, the Clerk of the Court recommends that permission be granted to F.P.&L. to install such facility.

Now, therefore, be it resolved by the Board of County Commissioners of Nassau County, Fla.:

Section 1. F.P.&L. Co. is hereby permitted to install a power distribution facility to serve the Police Administration and Detention Facility on the southside of A1A two miles west of Yulee as shown on Exhibit "A" which is attached hereto and made a part hereof.

Section 2. All resolutions or parts of resolutions in conflict herewith are hereby repealed.

Section 3. this resolution shall take effect immediately upon its adoption.

November 8, 1977

Date

Douglas Hodges

Vice Chairman

Board of County Commissioners, Nassau County

ATTEST:

Prockey
Ex-Officio Clerk

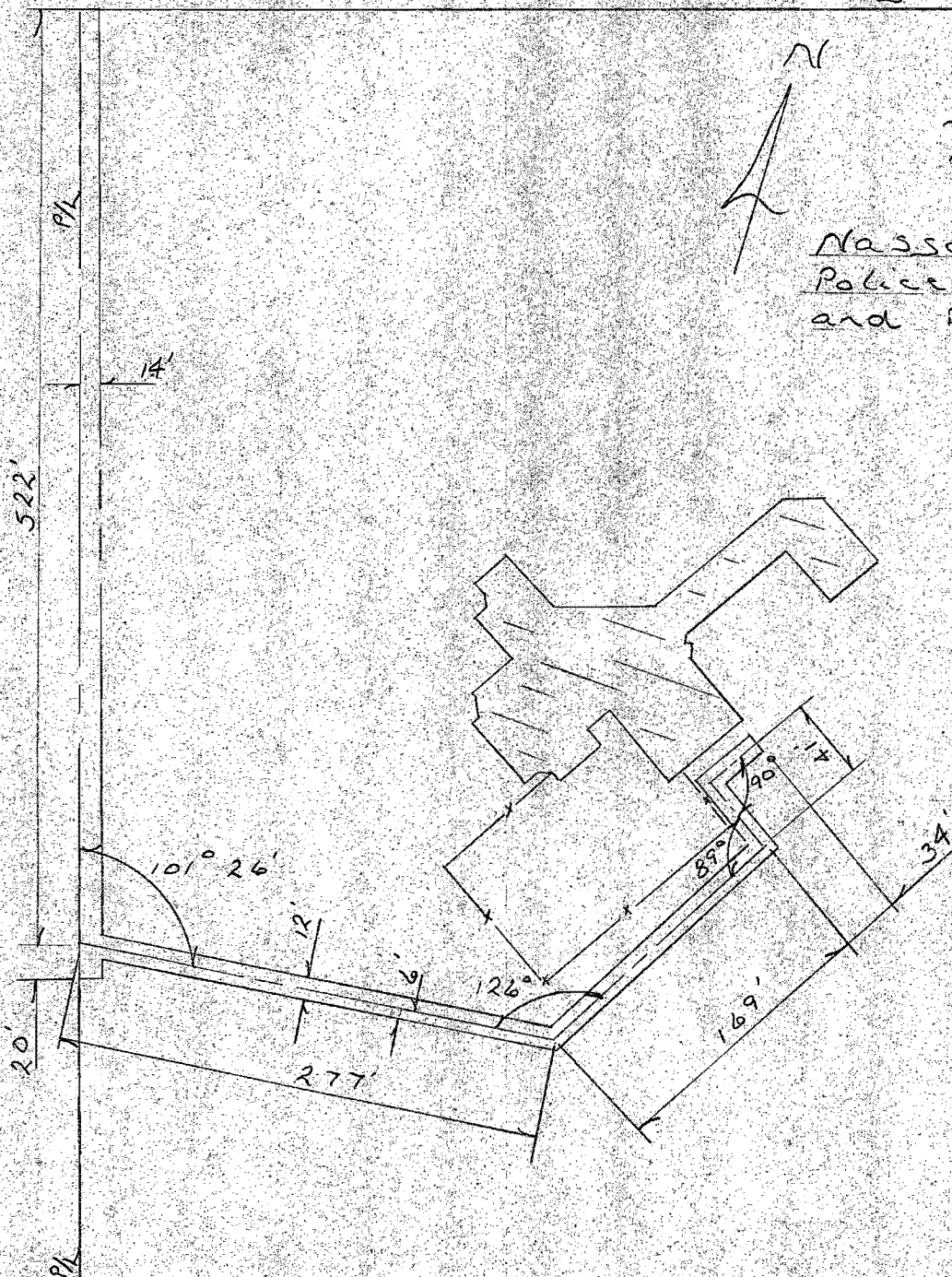
SR 200

R/O



Section 44
Township 2N
Range 27E

Nassau County
Police Administration
and Detention Facility



CHIEF ENGINEER

APPROVED:

Exhibit A

FLORIDA POWER & LIGHT COMPANY

DATE 11-3-77

SCALE None

A - -

FORM 1343 REV. 1/766

DRAWN BY	DJ
CHECKED	
CORRECT	

NO.	DATE	REVISION	BY	CH	CORR	APP